

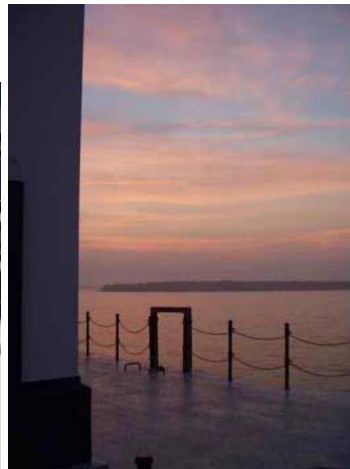
DeTour Reef Light Preservation Society Lighthouse Keeper Program Information and Application

Rustic Lighthouse Experience for 2023 Season

DRLPS spent the summer of 2022 looking into options to restore power to the Light. It was determined that the underwater power cable is not repairable. As we work to restore power to the Light, we will be scheduling Keeper weekends as we have done in the past. The experience will look a little more rustic, however. There will be a generator that can be run occasionally to provide use of the microwave and refrigerator. However, there will be no hot water available for showers or potable water. Please bring your drinking water, charcoal for the grill and a flashlight.

Tours will be available on a limited basis.

Thank you for your interest in the Lighthouse Keeper program at the DeTour Reef Light (DRL). The following paragraphs describe expectations and responsibilities. There is a fee for this program. This program and application process is modeled after successful Lighthouse Keeper programs on the Great Lakes and the East and West Coasts of the United States and has been very successful at DeTour Reef Light Since 2005. The Keeper Program is designed around supporting public tours of DeTour Reef Light and the performance of housekeeping.



Responsibilities

The primary responsibilities of Keepers are to clean and do housekeeping on the lighthouse, greet visitors, provide them with historical information about the DeTour Reef Light, and assure that their visit to the Light is a safe and enjoyable experience. Keepers will assist visitors up and down the vertical ladders (with a harness system), assist the DRLPS trained Tour Guides and provide light refreshments. Keepers are required to learn basic historic information about the Lighthouse. They must be energetic, be comfortable speaking with the public, be in excellent health, and be able to climb and descend with ease the 20-foot vertical ladders on the side of the pier structure. For a description of our tour program please go to www.drlps.com and download the tour brochure. The DeTour Reef Light Preservation Society “Keepers Handbook” provides specific instructions to keepers.



Dates Available

The Lighthouse Keepers Program normally involves 4 to 6 keepers in residence three days and two nights during weekends from mid-June to through August. Orientation will normally be Friday, with the keeper in residence on DeTour Reef Light from Friday afternoon until Sunday afternoon. Boat travel to and from the lighthouse is dependent on weather conditions and times may change. Keepers are required to read and understand the background material they will be provided and to view the DVD "Gateway to Superior: Saving the DeTour Reef Light." This DVD is available from DRLPS for \$8 (plus tax, shipping and handling). At least four keepers are required for each keeper weekend. Up to six keepers may be scheduled. DRLPS will combine individual and couple applications to fill keeper positions for each weekend. Your Keeper Program can be extended for additional days. Please indicate on your application if you would like to extend your program.

Orientation Program

All Keepers are obligated to attend an orientation prior to overnight at the Light. Keepers should plan on being available on Drummond Island for orientation no later than noon on the day of their scheduled service. DRLPS can assist with finding discounted lodging on Drummond Island or DeTour before and after the keeper's service dates.

Living Quarters



Access to the Lighthouse is by boat and then climbing a 20-foot vertical ladder recessed into the pier wall. Living quarters are on the second level. There are two bedrooms, one with a double bed and one with two bunk

beds. It has a modern bath, an office, a dining/common area, and a small kitchen. Water is filtered but not sterilized due to lack of shore power. Keepers provide and prepare all of their own food. The quarters are equipped with dishes, cooking utensils, appliances (coffee maker, microwave, toaster, blender, and refrigerator) and paper products. Folding canvas chairs are provided for use on the decks. A small bar-b-que is also available on the Lighthouse. Keepers provide their own sleeping bag (or sheets and blankets), pillow cases, towels and wash clothes.

Rules

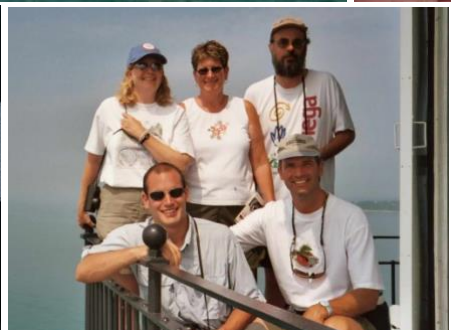
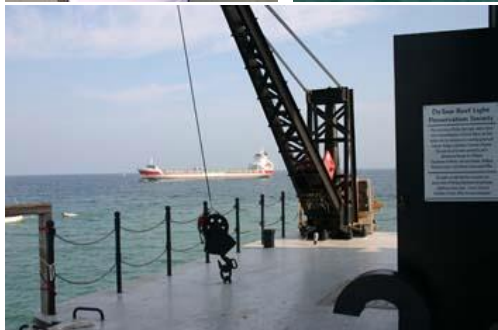
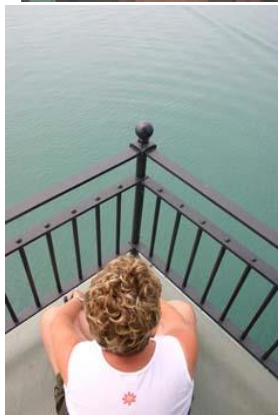
All visitors and keepers must read and sign a "Release of Liability and Assumption of Risk" waiver. Keepers are also required to read and fully understand the DRLPS Keepers Guide. No smoking is permitted within the lighthouse structure. DRLPS members, guests, and visitors are not permitted on the Light except if on the public tour or by the explicit approval of a DRLPS Director. No boats are to secure to the lighthouse as significant damage and injury can result from boats smashing against the lighthouse pier because of boat and freighter wakes. Absolutely no access is permitted to the shelf on the exterior of the lantern. Access to the exterior deck at the watch room level (just below the lantern) will be prohibited during periods of rain and high winds. Keepers are expected to be neat, well groomed, and appropriately attired when tours are being conducted. Everyone must present themselves in the professional manner befitting hosts at an historic site. The Light and living quarters must be cleaned up and all trash removed when Keepers complete their program. Additional rules and requirements are included in the Keepers Guide and should be reviewed as part of your application process.

Keeper Experience

There are few lighthouses that have Keeper programs that offer the participants an opportunity to live in an historic lighthouse and DeTour Reef Light is believed to be the first offshore lighthouse with such a program. Working as a Keeper is a very rewarding experience. The view from the tower is spectacular. All shipping between Lake Superior and the lower Lakes passes DeTour Reef Light as well as a large number of pleasure boats. Although Keepers may thoroughly enjoy the time they spend here, make new friends and walk in the footsteps of past keepers, there are also housekeeping and tour responsibilities.

Individuals interested in the DRLPS Lighthouse Keeper program are encouraged to complete and send in the application on the following pages:

The Keeper Experience on DeTour Reef Light



DeTour Reef Light Preservation Society

Application for the Lighthouse Keeper Program

Application Procedure

Applicants must complete, sign, and return the attached application form. The following items are also required for first time DeTour Reef Light Keepers (These items not required for repeat keepers):

1. A letter explaining why you want to be a Volunteer Keeper.
2. A brief resume including your employment history and other experience.

Please list the names of the applicants. All Lighthouse Keepers under 18 years of age must be accompanied by a parent or legal guardian. The accompanying parent or legal must sign our assumption of risk and waiver of liability for minors. All applicants must be available on Drummond Island from noon of their first service day until late afternoon of their last service day. Singles are welcome to apply. Applicants are encouraged to lock in their weekend of choice with payment of the program charge at time of application.

Name (s) _____

Address _____

City/State/Zip _____

Telephone (Home) _____ Telephone (cell) _____

E-Mail _____

(Very important as this is our primary way to communicate with you).

I learned about the DeTour Reef Light Keeper Program from _____

If individual applicants (or couples) wish to work together, each person or couple must submit a separate application. Please list below the names of other applicants with whom you would like to be scheduled.

I would like to be scheduled with _____

Program Contribution

The Program Contribution for the three-day two-night experience will be due upon notification of acceptance and is non-refundable unless program cancelled by DRLPS. The fee is \$245 per person (DRLPS members receive a \$20 per person discount, minors a 50% discount) and includes the cost of the charter boat and captain to take keepers to and from the lighthouse. A portion of this contribution is tax deductible as permitted by law. You may choose to extend your Keeper Program. The cost to extend the program after the first two nights is \$61.25 per night for non-members and \$56.25 for members. Those choosing to extend their program for a week will get the last night (Thursday night) free.

2023 Desired Service dates

Generally, service dates will be a Friday through Sunday, although mid-week and longer service programs are available, providing four weekends can be staffed with keepers. Indicate the priority (1st, 2nd, 3rd, etc.) for all weekend's mid-June through August below that you are available to serve as a keeper. The more choices you indicate, the greater your opportunity for selection. Weekends are frequently reserved with payment of the program fee a year in advance.

The following dates are available for up to six keepers:

6/16-6/18 _____	6/23-6/25 _____	6/30-7/02 _____	7/07-7/09 _____
7/14-7/16 _____	7/21-7/23 _____	7/28-7/30 _____	8/04-8/06 _____
8/11-8/13 _____	8/18-8/20 _____	8/25-8/27 _____	9/01-9/03 _____

My signature below indicates that I have read and understand this entire application, including the explanation of Keepers' responsibilities and guidelines. I understand that there is no compensation for this position and also fully understand that, if accepted, I am agreeing to work at the lighthouse on the days and dates assigned to me, that tours may be scheduled throughout the day, and that I will be resident on the Lighthouse without leaving during my service. I understand that some aspects of the responsibilities, particularly the providing of tower tours, require vigorous health, ascending and descending the pier ladders and tower steps and the ability to deal with the public and handle unexpected emergencies. I further understand that duties include performing routine cleaning and light maintenance and that any pictures taken in connection with the lighthouse keeper program, and provided to DRLPS may be used by DRLPS without additional permission & without compensation of any kind. I agree to attend the required orientation session and to perform work assigned to me as a Keeper of DeTour Reef Light.

Signature _____ Date _____

Signature _____ Date _____

Application MUST be signed. Both applicants must sign if applying as a couple.

Please mail to:

DRLPS
Lighthouse Keeper Program
P.O. Box 307
Drummond Island, MI 49726

For additional information:

ToursandKeepers@drlps.com
www.DRLPS.com
906-430-8169